

# BIS(2-ETHYLHEXYL) TEREPHTHALATE

## Safety Data Sheet

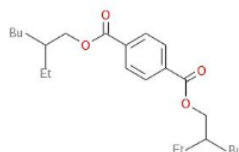
according to Regulation (EC) No. 1907/2006 (REACH) with its amendment Regulation (EU) 2015/830  
Issue date: 25 Jan 2019 Revision date: 19 Aug 2020 Version: 2.0

# SIBUR

## SECTION 1: Identification of the substance/mixture and of the company/undertaking

### 1.1. Product identifier

Product form : Substance  
Trade name : BIS(2-ETHYLHEXYL) TEREPHTHALATE  
IUPAC name : 1,4-bis(2-ethylhexyl) benzene-1,4-dicarboxylate  
EC-No. : 229-176-9  
CAS-No. : 6422-86-2  
REACH registration No : 01-2119446265-39-0023  
Type of product : Plasticizer  
Formula : C<sub>24</sub>H<sub>38</sub>O<sub>4</sub>  
Chemical structure :



Synonyms : DOTP; dioctyl terephthalate; / di-2-ethylhexylterephthalate; DEHTP; / terephthalic acid, bis(2-ethylhexyl)ester; / 1,4-Benzenedicarboxylic acid, 1,4-bis(2-ethylhexyl) ester; bis(2-ethylhexyl) -1,4-benzenedicarboxylate  
Product group : Raw material

### 1.2. Relevant identified uses of the substance or mixture and uses advised against

#### 1.2.1. Relevant identified uses

Main use category : Industrial use, Professional use, Consumer use  
Use of the substance/mixture : Chemical raw material

| Title   | Use descriptors  |
|---|--|
| Adhesives and Sealants - Industrial                 | SU0, PROC1, PROC2, PROC3, PROC4, PROC5, PROC7, PROC8a, PROC8b, PROC9, PROC15, ERC5                             |
| Coatings and Inks - Industrial                      | SU0, SU7, PROC1, PROC2, PROC3, PROC4, PROC5, PROC7, PROC8a, PROC8b, PROC10, ERC5                               |
| Plasticizer (plastisol) - Industrial                | SU0, PROC1, PROC2, PROC3, PROC5, PROC8a, PROC8b, PROC13, ERC4, ERC5  |
| Plasticizer ( PVC articles) - Industrial/ Consumer  | SU0, PC32, PROC3, PROC4, PROC5, PROC8a, PROC8b, PROC9, PROC14, PROC21, PROC24, AC5, AC10, AC13, ERC10a, ERC11a |
| Coatings and Inks - Professional                    | SU0, PROC2, PROC3, PROC4, PROC5, PROC8a, PROC10, PROC11, PROC19, ERC8c, ERC8f                                  |
| Construction formulation additives - Professional   | SU0, SU19, PROC5, PROC8b, PROC10, ERC8c, ERC8f   |
| Plasticizer (plastisol) - Professional              | SU0, SU19, PROC3, PROC5, PROC8a, PROC10, PROC19, ERC8c, ERC8f  |
| Laboratory use - Professional                       | SU0, PROC15, ERC8a, ERC9a  |
| Coatings and Inks - Consumer                        | PC9a, ERC8c, ERC8f   |
| Construction formulation additives - Consumer       | SU0, PC1, PROC5, PROC8b, PROC10, ERC8c, ERC8f, ERC10a  |
| Plasticizer (plastisol) - Consumer                  | SU0, PC32, AC5a, AC10, AC13a, AC13b, ERC10a, ERC11a  |
| Formulation (non plasticizer)                       | SU0, PROC1, PROC2, PROC3, PROC4, PROC5, PROC8a, PROC8b, PROC9, PROC14, PROC15, ERC2, ERC3                      |
| Distribution and storage                            | SU0, PROC1, PROC2, PROC3, PROC4, PROC5, PROC8a, PROC8b, PROC9, PROC15, ERC2                                    |
| Plasticizer (plastisol, PVC articles) - Formulation | SU0, PROC1, PROC2, PROC3, PROC4, PROC5, PROC8a, PROC8b, PROC9, PROC14, PROC15, ERC2                            |

Full text of use descriptors: see section 16

# BIS(2-ETHYLHEXYL) TEREPHTHALATE

## Safety Data Sheet

according to Regulation (EC) No. 1907/2006 (REACH) with its amendment Regulation (EU) 2015/830

### 1.2.2. Uses advised against

No additional information available

### 1.3. Details of the supplier of the safety data sheet

#### Manufacturer

SIBUR-KHIMPROM JSC

Promishlennaya str. 98

614055 Perm - Russian Federation

T +7 3422 90-89-01 (Moscow, 7.00 to 15.00) - Chief Engineer - F +7 3422 90-86-60

[mail-shp@sibur.ru](mailto:mail-shp@sibur.ru)

#### Only Representative

Gazprom Marketing and Trading France

avenue des Champs-Élysées 68

75008 Paris - France

T +33 1 42 99 73 50 - F +33 1 42 99 73 99

[didier.lebout@gazprom-mt.com](mailto:didier.lebout@gazprom-mt.com)

### 1.4. Emergency telephone number

Emergency number : +7 3422 90-87-05 (round the clock)

| Country    | Official advisory body   | Address                                       | Emergency number   | Comment  |
|------------|--|---|--|--|
| Belgium    | Centre Anti-Poisons/Antigifcentrum<br>c/o Hôpital Central de la Base - Reine Astrid                      | Rue Bruyn 1<br>1120 Bruxelles/Brussel         | +32 70 245 245   | Please dial: 070 245 245 for any urgent questions about intoxication (free of charge 24/7), if not accessible, dial: 02 264 96 30 (standard fee) |
| Croatia    | Centar za kontrolu otrovanja<br>Institut za medicinska istraživanja i medicinu rada                      | Ksaverska Cesta 2<br>p.p. 291<br>10000 Zagreb | +385 1 234 8342  |  |
| Denmark    | Giftlinjen<br>Bispebjerg Hospital  | Bispebjerg Bakke 23<br>2400 København NV      | +45 82 12 12 12  |  |
| Estonia    | Mürgistusteabekeskus   | Gonsiori 29<br>15027 Tallinn                  | 16662<br>+372 626 93 90  |  |
| Finland    | Myrkytystietokeskus  | Stenbäckinkatu 9<br>PO BOX 100<br>29 Helsinki | +358 9 471 977<br>+358 800 147 111   |  |
| Greece     | Poisons Information Centre<br>Children's Hospital P&A Kyriakou   | 11762 Athens                                  | +30 2 10 779 3777  |  |
| Greece     | Department of Forensic Medicine & Toxicology<br>Aristotle University of Thessaloniki,<br>Medical Faculty | 54006 Thessaloniki                            |  |  |
| Ireland    | National Poisons Information Centre<br>Beaumont Hospital   | PO Box 1297<br>Beaumont Road<br>9 Dublin      | +353 1 809 2566<br>(Healthcare professionals-<br>24/7)<br>+353 1 809 2166 (public,<br>8am - 10pm, 7/7) |  |
| Latvia     | Valsts Toksikoloģijas centrs,<br>Saindēšanās un zāļu informācijas centrs                                 | Hipokrāta 2<br>1038 Rīga                      | +371 67 04 24 73   |  |
| Lithuania  | Apsinuodijimų informacijos biuras  | Birutės g. 56<br>8110 Vilnius                 | +370 5 236 20 52<br>+370 687 53378   |  |
| Luxembourg | Centre Anti-Poisons/Antigifcentrum<br>c/o Hôpital Central de la Base - Reine Astrid                      | Rue Bruyn 1<br>1120 Bruxelles/Brussel         | +352 8002 5500   |  |
| Malta      | Medicines & Poisons Info Office  | Mater Dei Hospital<br>MSD Msida               | +356 2545 6504   |  |

# BIS(2-ETHYLHEXYL) TEREPHTHALATE

## Safety Data Sheet

according to Regulation (EC) No. 1907/2006 (REACH) with its amendment Regulation (EU) 2015/830

|                |   |   |  |   |
|----------------|---|---|--|---|
| Malta          | Medicines & Poisons Info Office   | Mater Dei Hospital<br>MSD Msida                               | +356 2545 6504   |   |
| Norway         | Giftinformasjonen<br>Helsedirektoratet  | P.O. Box 7000 St. Olavs<br>Plass<br>130 Oslo                  | +47 22 591300  |   |
| Slovakia       | Národné toxikologické informačné<br>centrum<br>Univerzitná nemocnica Bratislava,<br>pracovisko Kramáre, Klinika<br>pracovného lekárstva a toxikológie | Limbová 5<br>833 05 Bratislava                                | +421 2 54 77 41 66   |   |
| Slovenia       | Center za klinično toksikologijo in<br>farmakologijo<br>Interna klinika, UKCL   | Zaloška cesta 7<br>1525 Ljubljana                             | +386 41 650 500  |   |
| Sweden         | Giftinformationscentralen   | Box 60 500<br>171 76 Stockholm                                | 112 – begär<br>Giftinformation<br>+46 10 456 6700 (Från<br>utlandet) |   |
| Switzerland    | Tox Info Suisse   | Freiestrasse 16<br>8032 Zürich                                | 145  | (from abroad: +41 44<br>251 51 51) non urgent<br>inquiry: +41 44 251<br>66 66                       |
| Turkey         | Ulusal Zehir Merkezi (UZEM)<br>Refik Saydam Hıfzıssıhha Merkezi<br>Başkanlığı   | Cemal Gürsel Cd. No: 18<br>Sihhiye<br>Çankaya<br>06590 Ankara | 114  | Information is<br>provided to public and<br>medical personnel on<br>poisoning incidents<br>via 114. |
| United Kingdom | National Poisons Information Service<br>(Birmingham Centre)<br>City Hospital  | Dudley Road<br>B18 7QH Birmingham                             | 0344 892 0111  |   |
| United Kingdom | National Poisons Information Service<br>(Cardiff Centre)<br>Gwenwyn Ward, Llandough Hospital  | Penarth<br>CF64 2XX Cardiff                                   | 0344 892 0111  |   |
| United Kingdom | National Poisons Information Service<br>Edinburgh<br>Royal Infirmary of Edinburgh   | Little France Crescent<br>EH16 4SA Edinburgh                  | 0344 892 0111  |   |
| United Kingdom | Guy's & St Thomas' Poisons Unit<br>Medical Toxicology Unit, Guy's & St<br>Thomas' Hospital Trust  | Avonley Road<br>SE14 5ER London                               | +44 20 7188 7188   |   |
| United Kingdom | National Poisons Information Service<br>(Newcastle Centre)<br>Regional Drugs and Therapeutics<br>Centre, Wolfson Unit                                 | Claremont Place<br>Newcastle-upon-Tyne<br>NE1 4LP Newcastle   | 0344 892 0111  |   |
| United Kingdom | National Poisons Information Service<br>(Belfast Centre)<br>Royal Victoria Hospital   | Grosvenor Road<br>BT12 6BA Belfast                            | 0344 892 0111  |   |

## SECTION 2: Hazards identification

### 2.1. Classification of the substance or mixture

#### Classification according to Regulation (EC) No. 1272/2008 [CLP]

Not classified

#### Adverse physicochemical, human health and environmental effects

To our knowledge, this product does not present any particular risk, provided it is handled in accordance with good occupational hygiene and safety practice.

# BIS(2-ETHYLHEXYL) TEREPHTHALATE

## Safety Data Sheet

according to Regulation (EC) No. 1907/2006 (REACH) with its amendment Regulation (EU) 2015/830

### 2.2. Label elements

#### Labelling according to Regulation (EC) No. 1272/2008 [CLP]

No labelling applicable

### 2.3. Other hazards

This substance/mixture does not meet the PBT criteria of REACH regulation, annex XIII  
This substance/mixture does not meet the vPvB criteria of REACH regulation, annex XIII

## SECTION 3: Composition/information on ingredients

### 3.1. Substances

Substance type : Mono-constituent

| Name                            | Product identifier  | %           | Classification according to Regulation (EC) No. 1272/2008 [CLP] |
|---------------------------------|---|-------------|---|
| BIS(2-ETHYLHEXYL) TEREPHTHALATE | (CAS-No.) 6422-86-2<br>(EC-No.) 229-176-9<br>(REACH-no) 01-2119446265-39-0023 | 99.5 – 99.9 | Not classified  |

### 3.2. Mixtures

Not applicable

## SECTION 4: First aid measures

### 4.1. Description of first aid measures

|                                       |  |
|---------------------------------------|--|
| First-aid measures general            | : Never give anything by mouth to an unconscious person.   |
| First-aid measures after inhalation   | : Remove person to fresh air and keep comfortable for breathing. If breathing difficulties persist : Get medical attention.  |
| First-aid measures after skin contact | : Remove contaminated clothing. Drench affected area with water for at least 15 minutes.   |
| First-aid measures after eye contact  | : Rinse immediately with plenty of water for 15 minutes. Remove contact lenses, if present and easy to do. Continue rinsing. If eye irritation persists: Get medical advice/attention. |
| First-aid measures after ingestion    | : Call a poison center or a doctor if you feel unwell.   |

### 4.2. Most important symptoms and effects, both acute and delayed

|                                     |  |
|-------------------------------------|--|
| Symptoms/effects                    | : Not expected to present a significant hazard under anticipated conditions of normal use. Inhalation of mists or vapours at elevated temperatures may cause respiratory irritation.                     |
| Symptoms/effects after inhalation   | : Exposure through inhalation probably has no effect on health, unless the product is overheated and decomposes. In case of inhalation of high concentrations : Risks of oedema and respiratory failure. |
| Symptoms/effects after skin contact | : None under normal conditions.  |
| Symptoms/effects after eye contact  | : None under normal conditions.  |
| Symptoms/effects after ingestion    | : Ingestion may cause nausea and vomiting.   |

### 4.3. Indication of any immediate medical attention and special treatment needed

Treat symptomatically.

## SECTION 5: Firefighting measures

### 5.1. Extinguishing media

|                                |  |
|--------------------------------|--|
| Suitable extinguishing media   | : Water spray. Dry powder. Foam. Carbon dioxide. |
| Unsuitable extinguishing media | : Do not use a heavy water stream.               |

### 5.2. Special hazards arising from the substance or mixture

|             |  |
|-------------|--|
| Fire hazard | : Could burn but do not ignite readily. In case of fire and/or explosion do not breathe fumes. |
|-------------|--|

# BIS(2-ETHYLHEXYL) TEREPHTHALATE

## Safety Data Sheet

according to Regulation (EC) No. 1907/2006 (REACH) with its amendment Regulation (EU) 2015/830

|  |                                |
|--|--------------------------------|
| Explosion hazard                                 | : No direct explosion hazard.  |
| Hazardous decomposition products in case of fire | : Toxic fumes may be released. |

### 5.3. Advice for firefighters

|                                |  |
|--------------------------------|--|
| Precautionary measures fire    | : Keep away from combustible materials. Keep container tightly closed and away from heat, sparks and flame.  |
| Firefighting instructions      | : In case of fire: stop leak if safe to do so. Eliminate all ignition sources if safe to do so. Use water spray or fog for cooling exposed containers. Do not enter fire area without proper protective equipment, including respiratory protection. Exercise caution when fighting any chemical fire. Fight fire with normal precautions from a reasonable distance. Prevent fire fighting water from entering the environment. |
| Protection during firefighting | : Do not attempt to take action without suitable protective equipment. Self-contained breathing apparatus. Complete protective clothing.   |
| Other information              | : High temperature decomposition products are harmful by inhalation.   |

## SECTION 6: Accidental release measures

### 6.1. Personal precautions, protective equipment and emergency procedures

|                  |   |
|------------------|---|
| General measures | : Use personal protective equipment (PPE). Avoid contact with skin and eyes. Avoid inhalation of vapours. Stop leak if safe to do so. Isolate from fire, if possible, without unnecessary risk. No flames, no sparks. Eliminate all sources of ignition. Use special care to avoid static electric charges. Absorb with : inert absorbent material. Prevent from entering sewers, basements and workpits, or any place where its accumulation can be dangerous. |
|------------------|---|

#### 6.1.1. For non-emergency personnel

|                      |   |
|----------------------|---|
| Protective equipment | : Wear recommended personal protective equipment. |
| Emergency procedures | : Ventilate spillage area.                        |

#### 6.1.2. For emergency responders

|                      |   |
|----------------------|---|
| Protective equipment | : Do not attempt to take action without suitable protective equipment. For further information refer to section 8: "Exposure controls/personal protection". |
| Emergency procedures | : Evacuate unnecessary personnel. Use grounded electrical/mechanical equipment.   |

### 6.2. Environmental precautions

Avoid release to the environment.

### 6.3. Methods and material for containment and cleaning up

|                         |  |
|-------------------------|--|
| For containment         | : Cover spill with non combustible material, e.g.: sand, earth, vermiculite. |
| Methods for cleaning up | : Take up liquid spill into absorbent material.                              |
| Other information       | : Dispose of materials or solid residues at an authorized site.              |

### 6.4. Reference to other sections

For further information refer to section 13.

## SECTION 7: Handling and storage

### 7.1. Precautions for safe handling

|                                   |   |
|-----------------------------------|---|
| Additional hazards when processed | : Handling this product may result in electrostatic accumulation. Use proper grounding procedures.                                |
| Precautions for safe handling     | : Ensure good ventilation of the work station. Wear personal protective equipment. Avoid all unnecessary exposure.                |
| Hygiene measures                  | : Do not eat, drink or smoke when using this product. Always wash hands after handling the product. Keep good industrial hygiene. |

### 7.2. Conditions for safe storage, including any incompatibilities

|                       |   |
|-----------------------|---|
| Technical measures    | : Take precautionary measures against static discharge.   |
| Storage conditions    | : Keep away from heat, sparks and flame. Keep container tightly closed. Protect from moisture. Protect from sunlight. Store in a well-ventilated place. |
| Incompatible products | : Combustible materials. Oxidizing materials.   |

# BIS(2-ETHYLHEXYL) TEREPHTHALATE

## Safety Data Sheet

according to Regulation (EC) No. 1907/2006 (REACH) with its amendment Regulation (EU) 2015/830

|                              |  |
|------------------------------|--|
| Incompatible materials       | : Direct sunlight. Sources of ignition. Heat sources.  |
| Storage temperature          | : 0 – 40 °C  |
| Heat and ignition sources    | : KEEP SUBSTANCE AWAY FROM: ignition sources. heat sources. flames or sparks.                        |
| Information on mixed storage | : KEEP SUBSTANCE AWAY FROM: oxidizing agents. combustible materials. (strong) acids. (strong) bases. |
| Storage area                 | : Keep out of direct sunlight. Meet the legal requirements. Store in a well-ventilated place.        |
| Packaging materials          | : steel.   |

### 7.3. Specific end use(s)

No additional information available

## SECTION 8: Exposure controls/personal protection

### 8.1. Control parameters

#### BIS(2-ETHYLHEXYL) TEREPHTHALATE (6422-86-2)

##### DNEL/DMEL (Workers)

|  |                           |
|--|---------------------------|
| Long-term - systemic effects, dermal     | 6.58 mg/kg bodyweight/day |
| Long-term - systemic effects, inhalation | 23.2 mg/m <sup>3</sup>    |

##### DNEL/DMEL (General population)

|  |                           |
|--|---------------------------|
| Long-term - systemic effects, oral       | 3.95 mg/kg bodyweight/day |
| Long-term - systemic effects, inhalation | 6.86 mg/m <sup>3</sup>    |
| Long-term - systemic effects, dermal     | 3.95 mg/kg bodyweight/day |

##### PNEC (Water)

|                                      |            |
|--------------------------------------|------------|
| PNEC aqua (freshwater)               | 0.08 µg/l  |
| PNEC aqua (marine water)             | 0.008 µg/l |
| PNEC aqua (intermittent, freshwater) | 0.014 µg/l |

##### PNEC (Sediment)

|                              |                 |
|------------------------------|-----------------|
| PNEC sediment (freshwater)   | 8.28 mg/kg dwt  |
| PNEC sediment (marine water) | 0.828 mg/kg dwt |

##### PNEC (Soil)

|           |             |
|-----------|-------------|
| PNEC soil | 15 µg/kg dw |
|-----------|-------------|

##### PNEC (Oral)

|                                 |                 |
|---------------------------------|-----------------|
| PNEC oral (secondary poisoning) | 52.7 mg/kg food |
|---------------------------------|-----------------|

##### PNEC (STP)

|                             |        |
|-----------------------------|--------|
| PNEC sewage treatment plant | 1 mg/l |
|-----------------------------|--------|

### 8.2. Exposure controls

#### Appropriate engineering controls:

Ensure good ventilation of the work station. Take precautionary measures against static discharge.

#### Hand protection:

Protective gloves. Chemical resistant gloves (according to European standard EN 374 or equivalent)

# BIS(2-ETHYLHEXYL) TEREPHTHALATE

## Safety Data Sheet

according to Regulation (EC) No. 1907/2006 (REACH) with its amendment Regulation (EU) 2015/830

### Eye protection:

Chemical goggles or face shield. EN 166

### Skin and body protection:

Wear suitable protective clothing

### Respiratory protection:

In case of insufficient ventilation, wear suitable respiratory equipment

### Personal protective equipment symbol(s):



### Environmental exposure controls:

Avoid release to the environment.

### Other information:

Do not eat, drink or smoke during use.

## SECTION 9: Physical and chemical properties

### 9.1. Information on basic physical and chemical properties

|   |  |
|---|--|
| Physical state                                  | : Liquid   |
| Appearance                                      | : Colorless liquid.  |
| Molecular mass                                  | : 390.5561 g/mol   |
| Colour  | : Colourless.  |
| Odour   | : No data available  |
| Odour threshold                                 | : No data available  |
| pH  | : No data available  |
| Relative evaporation rate (butylacetate=1)      | : No data available  |
| Melting point                                   | : < -67.2 °C Atm. press.: 1 atm Decomposition: 'no' Sublimation: 'no'        |
| Freezing point                                  | : No data available  |
| Boiling point                                   | : 375 °C Atm. press.: 101,325 kPa Decomposition: 'no'                        |
| Flash point                                     | : 212 °C Atm. press.: 101,325 kPa  |
| Auto-ignition temperature                       | : 387 (98 kPa)   |
| Decomposition temperature                       | : No data available  |
| Flammability (solid, gas)                       | : Not applicable   |
| Vapour pressure                                 | : < 0.001 Pa Temp.: 25 °C  |
| Relative vapour density at 20 °C                | : No data available  |
| Relative density                                | : 0.98 (20 °C)   |
| Solubility                                      | : Water: 0.4 µg/l (22,5 °C)  |
| Partition coefficient n-octanol/water (Log Pow) | : 5.72   |
| Viscosity, kinematic                            | : No data available  |
| Viscosity, dynamic                              | : 65.8 mPa·s Temp.: 'other:25.0°C' Parameter: 'dynamic viscosity (in mPa s)' |
| Explosive properties                            | : No data available  |
| Oxidising properties                            | : No data available  |
| Explosive limits                                | : No data available  |

### 9.2. Other information

No additional information available

# BIS(2-ETHYLHEXYL) TEREPHTHALATE

## Safety Data Sheet

according to Regulation (EC) No. 1907/2006 (REACH) with its amendment Regulation (EU) 2015/830

### SECTION 10: Stability and reactivity

#### 10.1. Reactivity

The product is non-reactive under normal conditions of use, storage and transport.

#### 10.2. Chemical stability

Stable under normal conditions.

#### 10.3. Possibility of hazardous reactions

No dangerous reactions known under normal conditions of use.

#### 10.4. Conditions to avoid

None under recommended storage and handling conditions (see section 7).

#### 10.5. Incompatible materials

No additional information available

#### 10.6. Hazardous decomposition products

Under normal conditions of storage and use, hazardous decomposition products should not be produced.

### SECTION 11: Toxicological information

#### 11.1. Information on toxicological effects

Acute toxicity (oral) : Not classified  
Acute toxicity (dermal) : Not classified  
Acute toxicity (inhalation) : Not classified

#### BIS(2-ETHYLHEXYL) TEREPHTHALATE (6422-86-2)

|                 |   |
|-----------------|---|
| LD50 oral rat   | > 5000 mg/kg bodyweight Animal: rat, Guideline: other:TSCA FHSA Regulations (1979): 16 CFR Part 1500.40 (Hazardous Substances and Articles, Administration and Enforcement Regulations) |
| LD50 dermal rat | > 20 ml/kg bw, 24 h   |

Skin corrosion/irritation : Not classified  
Additional information : Based on available data, the classification criteria are not met  
Serious eye damage/irritation : Not classified  
Additional information : Based on available data, the classification criteria are not met  
Respiratory or skin sensitisation : Not classified  
Additional information : Based on available data, the classification criteria are not met  
Germ cell mutagenicity : Not classified (Based on available data, the classification criteria are not met)  
Carcinogenicity : Not classified (Based on available data, the classification criteria are not met)

Reproductive toxicity : Not classified  
Additional information : Based on available data, the classification criteria are not met

STOT-single exposure : Not classified  
Additional information : Based on available data, the classification criteria are not met

#### BIS(2-ETHYLHEXYL) TEREPHTHALATE (6422-86-2)

|                                 |  |
|---------------------------------|--|
| NOAEL (oral, rat)               | 277 mg/kg bodyweight rat, male, subchronic |
| NOAEC (inhalation, rat, vapour) | 0.0718 mg/l systemic, subchronic           |

STOT-repeated exposure : Not classified  
Additional information : Based on available data, the classification criteria are not met



# BIS(2-ETHYLHEXYL) TEREPHTHALATE

## Safety Data Sheet

according to Regulation (EC) No. 1907/2006 (REACH) with its amendment Regulation (EU) 2015/830

### BIS(2-ETHYLHEXYL) TEREPHTHALATE (6422-86-2)

|                                     |                         |
|-------------------------------------|-------------------------|
| NOAEL (oral, rat, 90 days)          | 79 mg/kg bodyweight/day |
| NOAEL (dermal, rat/rabbit, 90 days) | 79 mg/kg bodyweight/day |
| Aspiration hazard                   | : Not classified        |

## SECTION 12: Ecological information

### 12.1. Toxicity

|   |   |
|---|---|
| Ecology - general   | : The product is not considered harmful to aquatic organisms nor to cause long-term adverse effects in the environment. |
| Hazardous to the aquatic environment, short-term (acute)  | : Not classified (Based on available data, the classification criteria are not met)                                     |
| Hazardous to the aquatic environment, long-term (chronic) | : Not classified  |
| Not rapidly degradable                                    |   |

### BIS(2-ETHYLHEXYL) TEREPHTHALATE (6422-86-2)

|                        |  |
|------------------------|--|
| LC50 fish 1            | > 984 mg/l <i>Pimephales promelas</i>  |
| EC50 Daphnia 1         | > 1.4 µg/l Test organisms (species): <i>Daphnia magna</i>  |
| EC50 72h algae (1)     | > 0.86 mg/l Test organisms (species): <i>Pseudokirchneriella subcapitata</i> (previous names: <i>Raphidocelis subcapitata</i> , <i>Selenastrum capricornutum</i> ) |
| NOEC chronic fish      | ≥ 0.28 mg/l <i>Oncorhynchus mykiss</i> (60 d)  |
| NOEC chronic crustacea | ≥ 760 mg/l <i>Daphnia magna</i> (21 d)   |

### 12.2. Persistence and degradability

No additional information available

### 12.3. Bioaccumulative potential

### BIS(2-ETHYLHEXYL) TEREPHTHALATE (6422-86-2)

|   |  |
|---|--|
| BCF other aquatic organisms 2                   | 393 L/kg, <i>Crassostrea virginica</i> |
| Partition coefficient n-octanol/water (Log Pow) | 5.72                                   |

### 12.4. Mobility in soil

### BIS(2-ETHYLHEXYL) TEREPHTHALATE (6422-86-2)

|   |            |
|---|------------|
| Partition coefficient n-octanol/water (Log Koc) | 5.07 – 6.6 |
|---|------------|

### 12.5. Results of PBT and vPvB assessment

### BIS(2-ETHYLHEXYL) TEREPHTHALATE (6422-86-2)

This substance/mixture does not meet the PBT criteria of REACH regulation, annex XIII

This substance/mixture does not meet the vPvB criteria of REACH regulation, annex XIII

### 12.6. Other adverse effects

No additional information available

## SECTION 13: Disposal considerations

### 13.1. Waste treatment methods

Waste treatment methods : Dispose of contents/container in accordance with licensed collector's sorting instructions.

# BIS(2-ETHYLHEXYL) TEREPHTHALATE

## Safety Data Sheet

according to Regulation (EC) No. 1907/2006 (REACH) with its amendment Regulation (EU) 2015/830

### SECTION 14: Transport information

In accordance with ADR / RID / IMDG / IATA / ADN

| ADR                                     | IMDG          | IATA          | ADN           | RID           |
|---|---------------|---------------|---------------|---------------|
| <b>14.1. UN number</b>                  |               |               |               |               |
| Not regulated                           | Not regulated | Not regulated | Not regulated | Not regulated |
| <b>14.2. UN proper shipping name</b>    |               |               |               |               |
| Not regulated                           | Not regulated | Not regulated | Not regulated | Not regulated |
| <b>14.3. Transport hazard class(es)</b> |               |               |               |               |
| Not regulated                           | Not regulated | Not regulated | Not regulated | Not regulated |
| <b>14.4. Packing group</b>              |               |               |               |               |
| Not regulated                           | Not regulated | Not regulated | Not regulated | Not regulated |
| <b>14.5. Environmental hazards</b>      |               |               |               |               |
| Not regulated                           | Not regulated | Not regulated | Not regulated | Not regulated |
| No supplementary information available  |               |               |               |               |

### 14.6. Special precautions for user

#### Overland transport

Not regulated

#### Transport by sea

Not regulated

#### Air transport

Not regulated

#### Inland waterway transport

Not regulated

#### Rail transport

Not regulated

### 14.7. Transport in bulk according to Annex II of Marpol and the IBC Code

Not applicable

### SECTION 15: Regulatory information

#### 15.1. Safety, health and environmental regulations/legislation specific for the substance or mixture

##### 15.1.1. EU-Regulations

No REACH Annex XVII restrictions

BIS(2-ETHYLHEXYL) TEREPHTHALATE is not on the REACH Candidate List

BIS(2-ETHYLHEXYL) TEREPHTHALATE is not on the REACH Annex XIV List

BIS(2-ETHYLHEXYL) TEREPHTHALATE is not subject to Regulation (EU) No 649/2012 of the European Parliament and of the Council of 4 July 2012 concerning the export and import of hazardous chemicals.

BIS(2-ETHYLHEXYL) TEREPHTHALATE is not subject to Regulation (EU) No 2019/1021 of the European Parliament and of the Council of 20 June 2019 on persistent organic pollutants

##### 15.1.2. National regulations

No additional information available

# BIS(2-ETHYLHEXYL) TEREPHTHALATE

## Safety Data Sheet

according to Regulation (EC) No. 1907/2006 (REACH) with its amendment Regulation (EU) 2015/830

### 15.2. Chemical safety assessment

No chemical safety assessment has been carried out

This substance is classified as not hazardous according to regulation (EC) 1272/2008 [CLP]

### SECTION 16: Other information

#### Indication of changes:

| Section | Changed item  | Change   | Comments    |
|---------|---|----------|-------------|
| All     | All sections were updated, the document format was changed. | Revision | Version 2.0 |

#### Abbreviations and acronyms:

|         |   |
|---------|---|
| ADN     | European Agreement concerning the International Carriage of Dangerous Goods by Inland Waterways   |
| ADR     | European Agreement concerning the International Carriage of Dangerous Goods by Road               |
| ATE     | Acute Toxicity Estimate   |
| BLV     | Biological limit value  |
| CAS-No. | Chemical Abstract Service number  |
| CLP     | Classification Labelling Packaging Regulation; Regulation (EC) No 1272/2008                       |
| DMEL    | Derived Minimal Effect level  |
| DNEL    | Derived-No Effect Level   |
| EC50    | Median effective concentration  |
| EC-No.  | European Community number   |
| EN      | European Standard   |
| IATA    | International Air Transport Association   |
| IMDG    | International Maritime Dangerous Goods  |
| LC50    | Median lethal concentration   |
| LD50    | Median lethal dose  |
| LOAEL   | Lowest Observed Adverse Effect Level  |
| NOAEC   | No-Observed Adverse Effect Concentration  |
| NOAEL   | No-Observed Adverse Effect Level  |
| NOEC    | No-Observed Effect Concentration  |
| OEL     | Occupational Exposure Limit   |
| PBT     | Persistent Bioaccumulative Toxic  |
| PNEC    | Predicted No-Effect Concentration   |
| REACH   | Registration, Evaluation, Authorisation and Restriction of Chemicals Regulation (EC) No 1907/2006 |
| RID     | Regulations concerning the International Carriage of Dangerous Goods by Rail                      |
| SDS     | Safety Data Sheet   |
| vPvB    | Very Persistent and Very Bioaccumulative  |
| WGK     | Water Hazard Class  |

#### Full text of use descriptors

|       |   |
|-------|---|
| AC10  | Rubber articles                               |
| AC13  | Plastic articles                              |
| AC13a | Plastic articles: Large surface area articles |

# BIS(2-ETHYLHEXYL) TEREPHTHALATE

## Safety Data Sheet

according to Regulation (EC) No. 1907/2006 (REACH) with its amendment Regulation (EU) 2015/830

|        |  |
|--------|--|
| AC13b  | Plastic articles: Toys intended for children's use (and child dedicated articles)  |
| AC5    | Fabrics, textiles and apparel  |
| AC5a   | Fabrics, textiles and apparel: Large surface area articles   |
| ERC10a | Widespread use of articles with low release (outdoor)  |
| ERC11a | Widespread use of articles with low release (indoor)   |
| ERC2   | Formulation into mixture   |
| ERC3   | Formulation into solid matrix  |
| ERC4   | Use of non-reactive processing aid at industrial site (no inclusion into or onto article)  |
| ERC5   | Use at industrial site leading to inclusion into/onto article  |
| ERC8a  | Widespread use of non-reactive processing aid (no inclusion into or onto article, indoor)  |
| ERC8c  | Widespread use leading to inclusion into/onto article (indoor)   |
| ERC8f  | Widespread use leading to inclusion into/onto article (outdoor)  |
| ERC9a  | Widespread use of functional fluid (indoor)  |
| PC1    | Adhesives, sealants  |
| PC32   | Polymer preparations and compounds   |
| PC9a   | Coatings and paints, thinners, paint removers  |
| PROC1  | Chemical production or refinery in closed process without likelihood of exposure or processes with equivalent containment conditions                                 |
| PROC10 | Roller application or brushing   |
| PROC11 | Non-industrial spraying  |
| PROC13 | Treatment of articles by dipping and pouring   |
| PROC14 | Tabletting, compression, extrusion, pelettisation, granulation   |
| PROC15 | Use as laboratory reagent  |
| PROC19 | Manual activities involving hand contact   |
| PROC2  | Chemical production or refinery in closed continuous process with occasional controlled exposure or processes with equivalent containment conditions                 |
| PROC21 | Low energy manipulation and handling of substances bound in/on materials or articles   |
| PROC24 | High (mechanical) energy work-up of substances bound in /on materials and/or articles  |
| PROC3  | Manufacture or formulation in the chemical industry in closed batch processes with occasional controlled exposure or processes with equivalent containment condition |
| PROC4  | Chemical production where opportunity for exposure arises  |
| PROC5  | Mixing or blending in batch processes  |
| PROC7  | Industrial spraying  |
| PROC8a | Transfer of substance or mixture (charging and discharging) at non-dedicated facilities  |
| PROC8b | Transfer of substance or mixture (charging and discharging) at dedicated facilities  |
| PROC9  | Transfer of substance or mixture into small containers (dedicated filling line, including weighing)  |
| SU0    | Other  |
| SU19   | Building and construction work   |
| SU7    | Printing and reproduction of recorded media  |

This information is based on our current knowledge and is intended to describe the product for the purposes of health, safety and environmental requirements only. It should not therefore be construed as guaranteeing any specific property of the product.